



3" NB Tank-Pro Butterfly Valve - weld-prepared inlet and 3"BSP threaded outlet. Lockable handle with T.I.R. as standard. Contact parts manufactured in 316 stainless steel with PTFE main seal.

Options - body may be supplied with or without 3/8"BSP venting port. Outlet may be supplied 3"BSP standard or extended, 3"NPT or weld-prepared. Congealing cargo closure plate may be incorporated.

Features

- Designed specifically to meet the needs of the road tanker industry and especially suited to chemical applications.
- Supplied as a complete unit requiring no extra parts to assemble the valve to the tank.
- The valve concept eliminates the need for the valve to be centralized when fitting to the tank, thus avoiding potential valve damage and/or leakage.
- Optional 3/8"BSP port integral to the valve body allows for a purge or sampling facility.
- Clean valve internal lines reduces the risk of contamination between successive cargoes.
- Eccentric outlet facilitates full self-draining.
- Simple maintenance procedure with all internal mechanism and seals common to the standard Fort Vale 3" butterfly valve, thus reducing the required stock of spare parts.
- Lockable handle with TIR facility as standard to meet ADR requirements. A removable square drive key is included with each valve.

Specification

Weight	6.07 Kgs
Design Pressure	6 Bar (87 PSI)
Body Hydraulic Test Pressure	10 Bar (145 PSI)
Design Temperature	-40°C to 200°C (-40°F to 392°F)

Lloyds Register of Shipping Design Appraisal document number **DCF9376/1**. Approved to **BS EN14432**.
Rijksdienst voor het Wegverkeer Approval number **VLG S-9301**.

Range

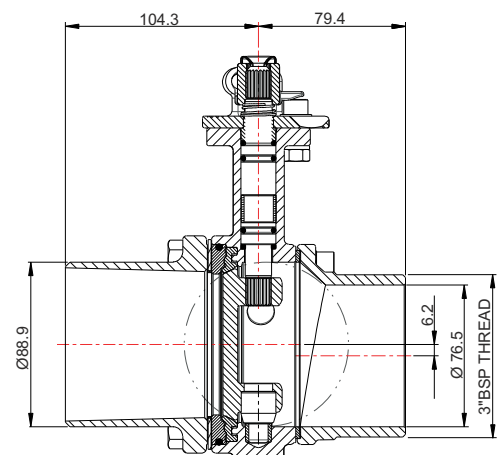
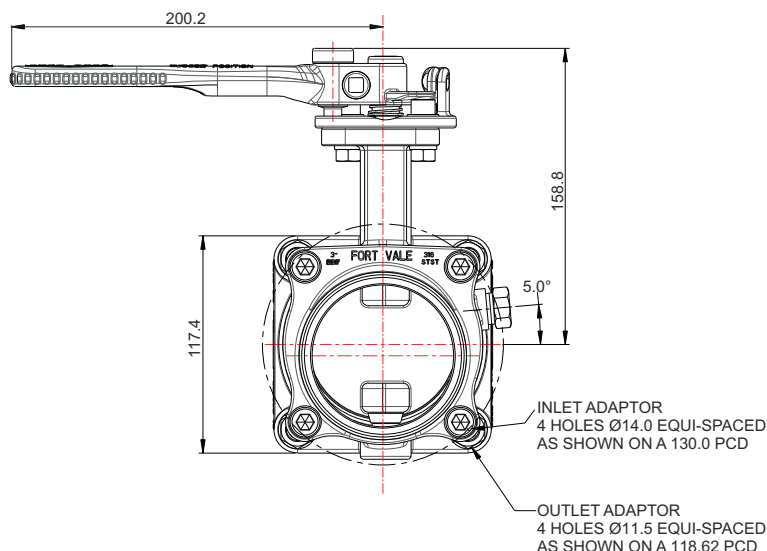
Part No.	Body	Outlet
368/9400SXBA	Non-vented	3"BSP standard
368/9400SVBA	Vented 3/8" BSP	3"BSP standard
368/9400SXEA	Non-vented	3"BSP extended
368/9400SVEA	Vented 3/8" BSP	3"BSP extended

Associated Parts

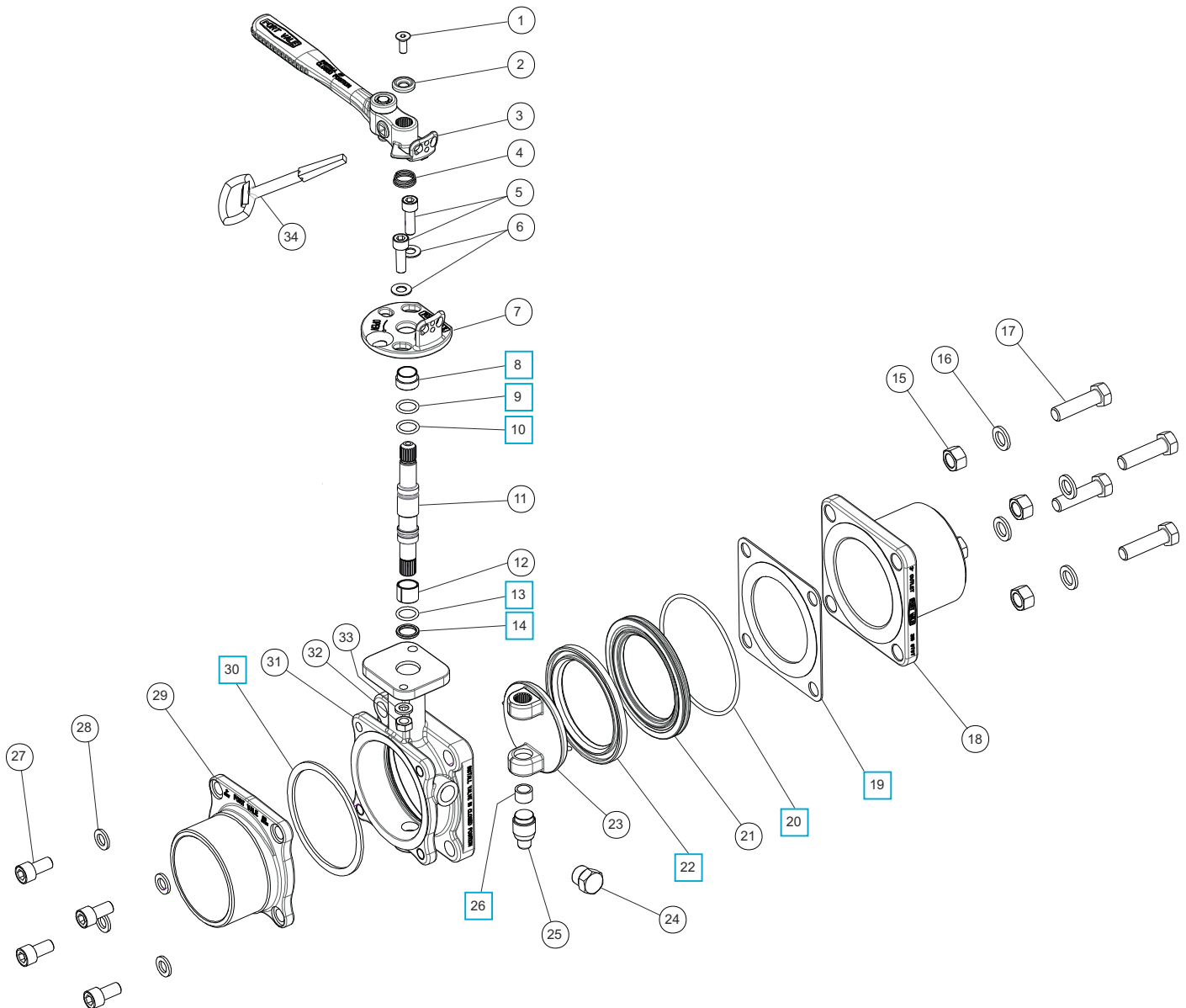
Associated Parts	Part No.
3" BSP blank cap with PTFE seal	10303PS
Conversion mounting kit	368/9401KIT

Fitting Details

Example shown : 3" Tank-Pro Butterfly Valve - part number 368/9400SXBA



Parts drawing



Item	Description	Part No.
1	M6 socket head set screw	5111-030
2	Washer	20370
3	Handle assembly	368/0075
4	Electrical continuity spring	368/0014
5	M8 socket head cap screw (2)	5111-148
6	M8 plain washer (2)	5113-005
7	Stuffing plate	368/0041
8	Stuffing clamp bush	368/0301 <input type="checkbox"/>
9	PTFE O Ring	20363 <input type="checkbox"/>
10	Viton O ring	20361 <input type="checkbox"/>
11	Spindle	368/0200
12	Split bearing *See Note A	252/0517
13	Perfluoroelastomer O Ring	5005-586 <input type="checkbox"/>
14	PTFE spindle seat	368/0009 <input type="checkbox"/>
15	M12 full nut (4)	5112-006
16	M12 spring washer (4)	5113-010
17	M12 hex head set screw (4)	5111-023

Note A : Split bearing, part no. 252/0517 is used in valves manufactured since November 2011. Please order 252/0517 in addition to 368/00SK if it is required as a spare part.

Item	Description	Part No.
18	Inlet adaptor *See Note B	368/9410
19	CNAF/PTFE inlet gasket	5005-707 <input type="checkbox"/>
20	Nitrile O ring	5005-342 <input type="checkbox"/>
21	Seal clamp	368/9148
22	PTFE main seal	368/0002 <input type="checkbox"/>
23	Closure plate	368/0400
24	3/8 Taper plug *See Note B	5128-0XX
25	Bottom spindle	368/0036
26	Bottom spindle bush	368/0035 <input type="checkbox"/>
27	M10 socket head cap screw (4)	5111-053
28	M10 spring washer (4)	5113-002
29	3" BSP outlet *See Note B	368/9430
30	PTFE outlet seal	5005-706 <input type="checkbox"/>
31	Body (non-vented) *See Note B	368/9420A
32	M8 full nut (2)	5112-001
33	M8 spring washer (2)	5113-003
34	Key	368/4625

Note B : Part number varies according to specification

SEAL KIT part number 368/94SK contains all parts marked